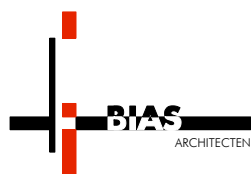


24 september 2008



# Woningbouw 't Maashofje Maasdam



**TYPE 1**  
2 vrijstaande woningen  
2 woningen 2/1 kap

**TYPE 2**  
5 eengezinswoningen

**TYPE 3**  
4 eengezinswoningen

**TYPE 4**  
10 appartementen met  
parkeergarage

41 p-plaatsen in plangebied  
5 p-plaatsen aan Hoeksedijk



**UITBREIDING WOONHUIS**  
zie BG 009

**TYPE 2**  
zie BG 003

**TYPE 1**  
zie BG 002

**TYPE 3**  
zie BG 004

**TYPE 3**  
zie BG 004

**NIEUWE LOODS**  
zie BG 008

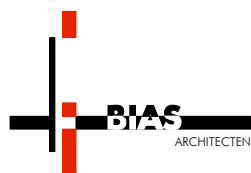
**TYPE 4**  
11 p-plaatsen in garage  
zie BG 005/006/007

**BOUWAANVRAAG**

<b>BIAS</b>	
ARCHITECTEN	3071HK Rotterdam Tel: 010 - 28 00 136 Fax: 010 - 28 00 138 Website: www.biasarch.nl
PROJECT	Lokatex/Gemeentewerf Maasdam
ONDERWERP	Situatie
PROJECTNR	BOUWAANVRAAG 01 30 juni 2008
DATUM	30 juni 2008
SCHAAL	1:200
NUMMER	BG 001 03

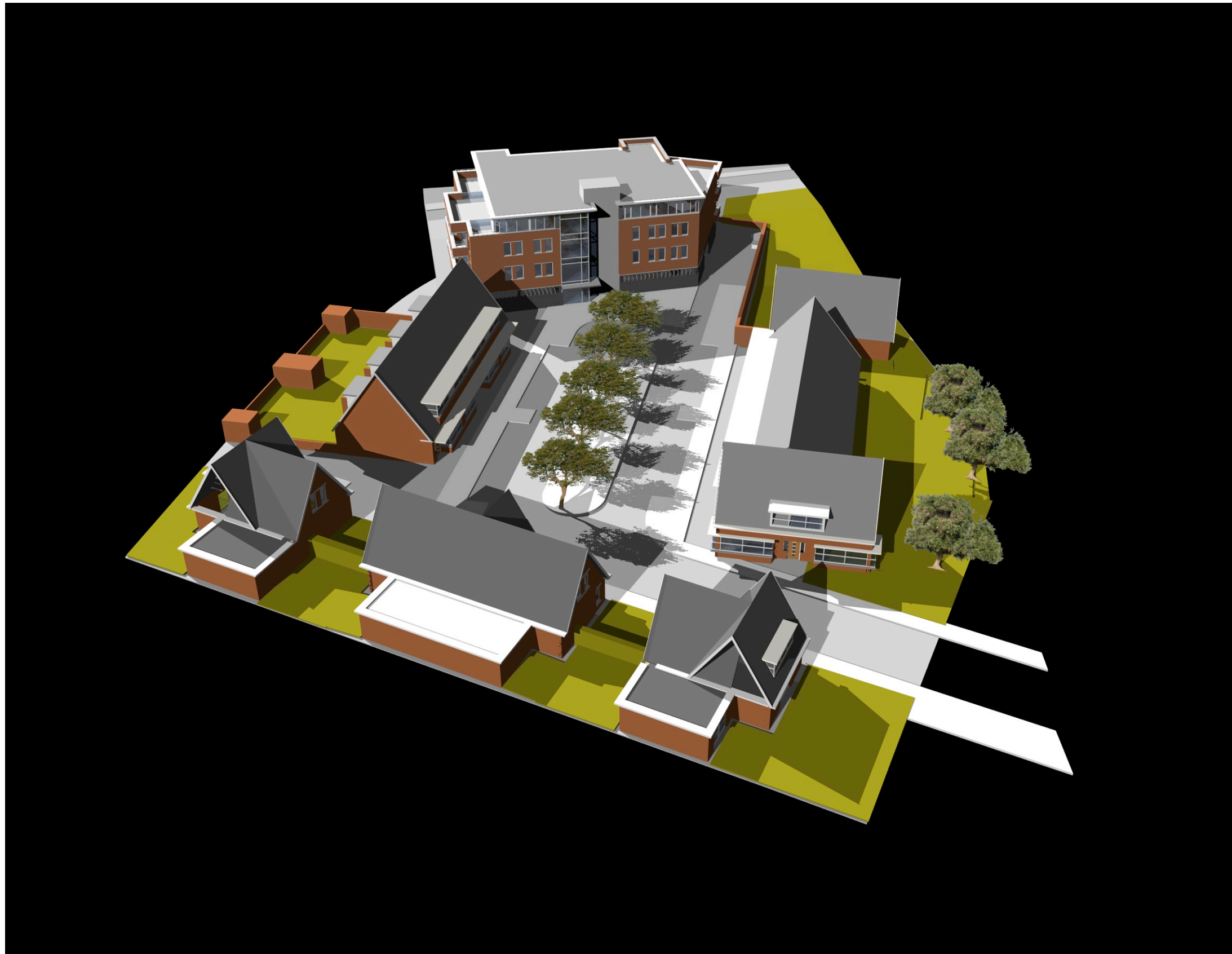


24 september 2008

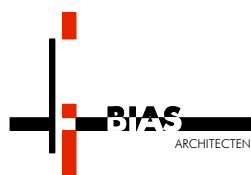


# Woningbouw 't Maashofje Maasdam





24 september 2008

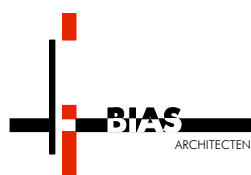


Woningbouw 't Maashofje Maasdam



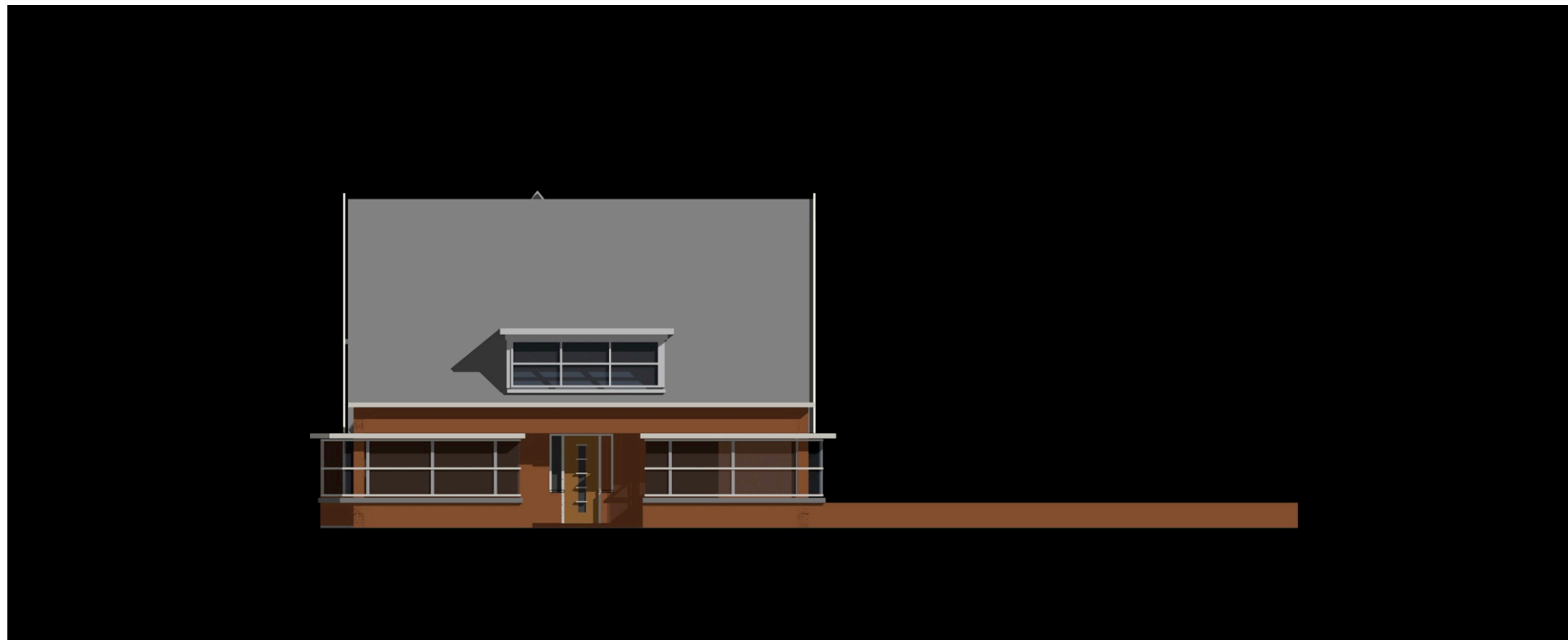


24 september 2008

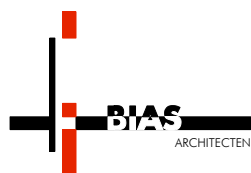


Woningbouw 't Maashofje Maasdam





24 september 2008

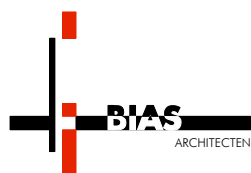


Woningbouw 't Maashofje Maasdam





24 september 2008



Woningbouw 't Maashofje Maasdam



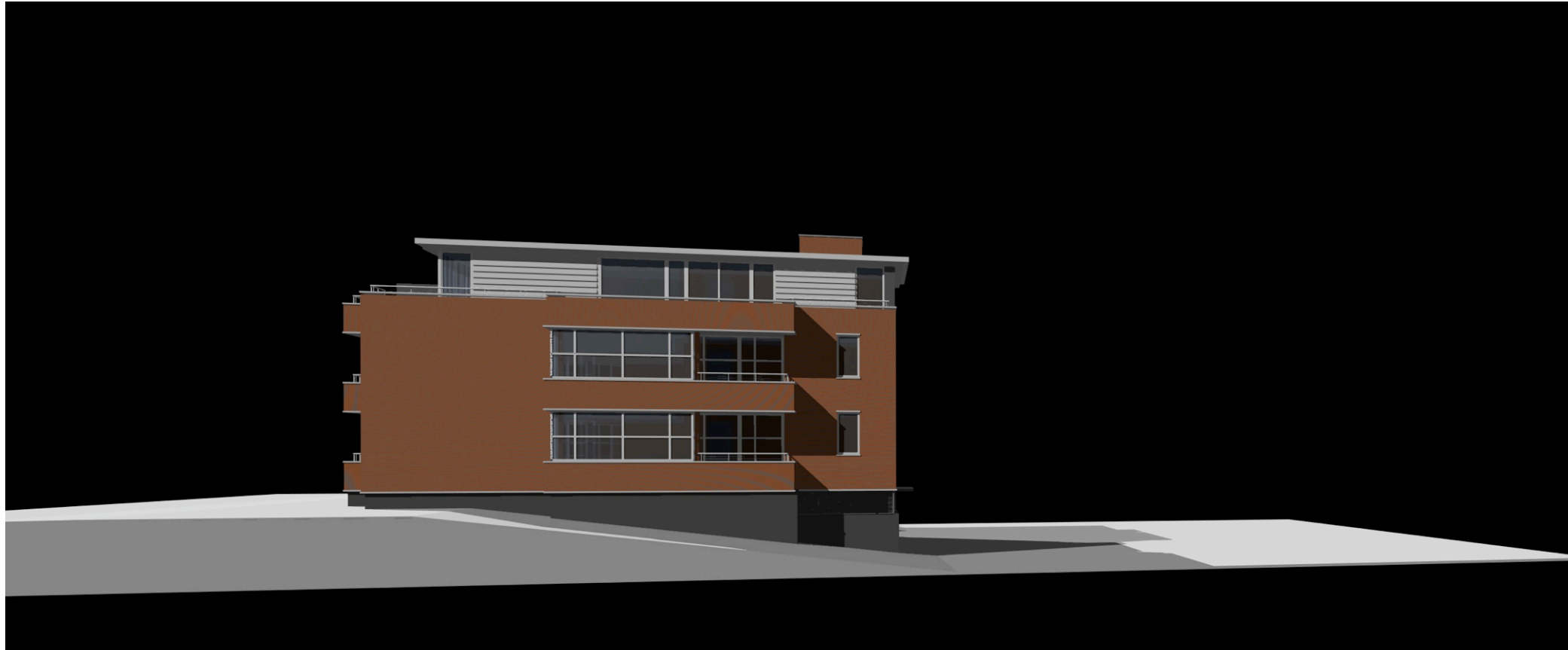


24 september 2008

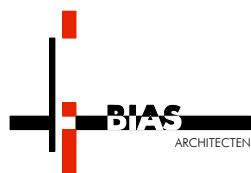


Woningbouw 't Maashofje Maasdam





24 september 2008



Woningbouw 't Maashofje Maasdam

